

Restroom Signs (Page 1 of 5)

Product Group - Offering Summary

Introduction:

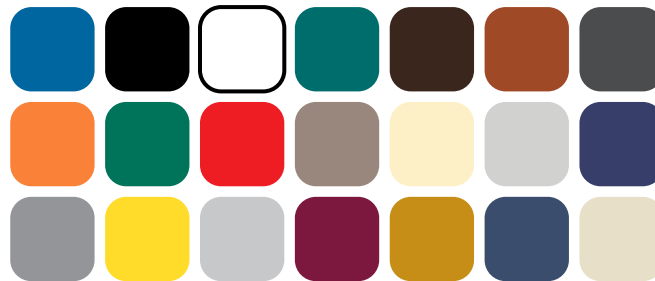
ComplianceSigns.com has a wide selection of restroom signs to meet almost any need, including ADA Braille, printed, engraved, acrylic and several mounting options. This restroom sign summary describes our varied types of signs and they options available for each. For more in-depth information on sign construction, please review our product data bulletins.

ADA Braille:

| | |
|----------------------|---|
| BRAILLE: | Yes |
| MOUNTING: | Adhesive Mounting Strips |
| LANGUAGES AVAILABLE: | English, Spanish, Bilingual |
| SIGN MATERIAL: | ADA Acrylic - 1/16" Substrate, 1/32" Tactile, Grade 2 Braille |
| WEB SHORTCUT: | https://www.compliancesigns.com/products/restrooms/ada-braille-restroom-signs |



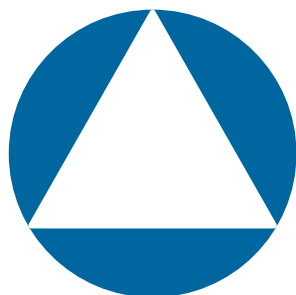
Example



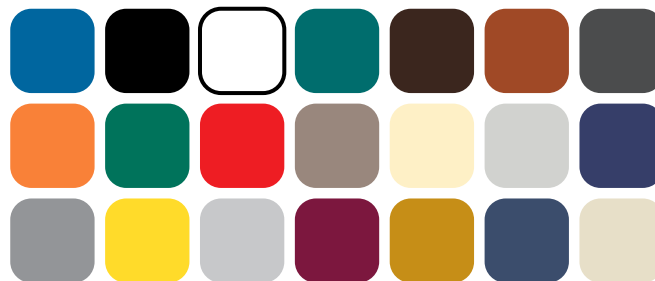
Available Background Colors

California Title 24 - ADA Door Sign:

| | |
|----------------------|---|
| BRAILLE: | No |
| MOUNTING: | Adhesive Mounting Stripes |
| LANGUAGES AVAILABLE: | English, Spanish, Bilingual |
| SIGN MATERIAL: | ADA Acrylic - 1/4" Acrylic |
| WEB SHORTCUT: | https://www.compliancesigns.com/Restroom_Door-Wall_L2.shtml |



Example



Available Background Colors

Restroom Signs (Page 2 of 5)

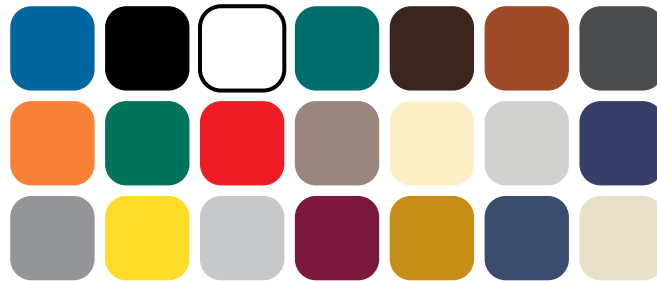
Product Group - Offering Summary

Surface Mount:

| | |
|------------------------|---|
| BRAILLE: | No |
| MOUNTING: | Self-Adhesive (Labels), Holes for Fasteners (Aluminum, Plastic) |
| LANGUAGES AVAILABLE: | English, Spanish, Bilingual |
| SIGN MATERIAL OPTIONS: | Aluminum, Plastic, Vinyl Labels, Magnetic |
| WEB SHORTCUT: | https://www.compliancesigns.com/products/restrooms/printed-surface-mount-restroom-signs |



Example



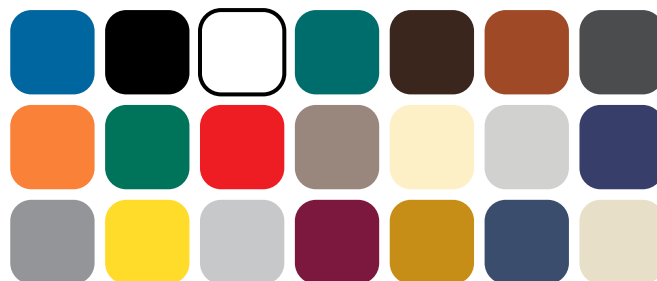
Available Background Colors

2D Projection Mount - Protrudes from Wall:

| | |
|----------------------|---|
| BRAILLE: | No |
| MOUNTING: | Adhesive Mounting Strips + Holes in Flange for Fastener Mounting |
| LANGUAGES AVAILABLE: | English, Spanish, Bilingual |
| SIGN MATERIAL: | Aluminum |
| WEB SHORTCUT: | https://www.compliancesigns.com/products/restrooms/2d-projection-mount-restroom-signs |



Example



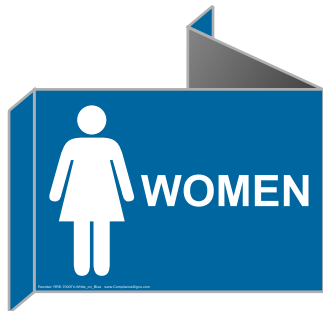
Available Background Colors

Restroom Signs (Page 3 of 5)

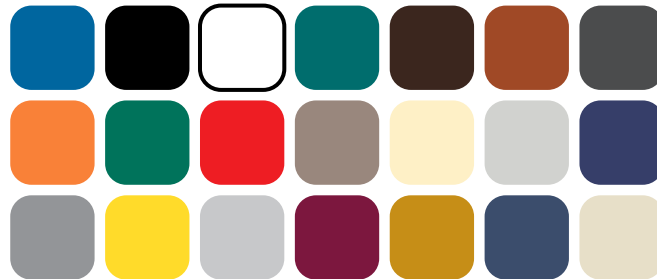
Product Group - Offering Summary

3D Triangle Mount - Protrudes from Wall:

| | |
|----------------------|---|
| BRAILLE: | No |
| MOUNTING: | Adhesive Mounting Strips + Holes in Flange for Fastener Mounting |
| LANGUAGES AVAILABLE: | English, Spanish, Bilingual |
| SIGN MATERIAL: | Aluminum |
| WEB SHORTCUT: | https://www.compliancesigns.com/products/restrooms/3d-triangle-projection-mount-restroom-signs |



Example



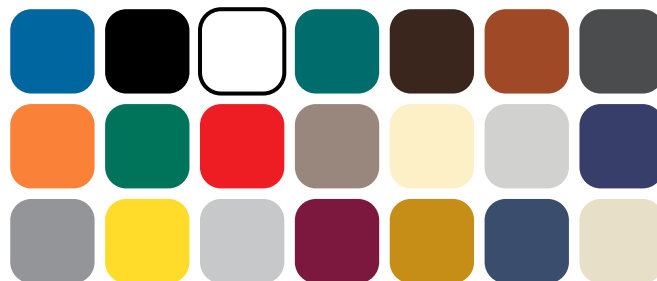
Available Background Colors

2D Projection Mount - Hangs from Ceiling:

| | |
|----------------------|---|
| BRAILLE: | No |
| MOUNTING: | Hangs between track and tile on drop ceiling |
| LANGUAGES AVAILABLE: | English, Spanish, Bilingual |
| SIGN MATERIAL: | Aluminum |
| WEB SHORTCUT: | https://www.compliancesigns.com/products/restrooms/ceiling-mount-restroom-signs |



Example



Available Background Colors

Restroom Signs (Page 4 of 5)

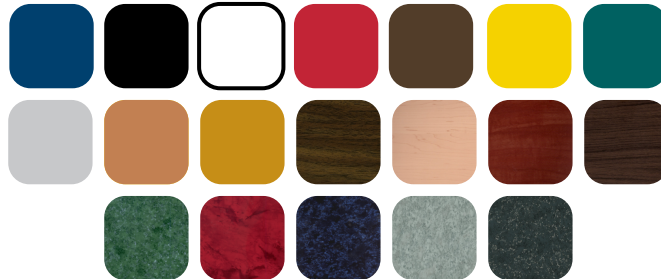
Product Group - Offering Summary

Engraved:

| | |
|----------------------|---|
| BRAILLE: | No |
| MOUNTING: | Adhesive Mounting Strips or Optional Bracket (Silver or Brass finish) |
| LANGUAGES AVAILABLE: | English, Spanish, Bilingual |
| SIGN MATERIAL: | 2-ply rotary engraved acrylic plastic |
| WEB SHORTCUT: | https://www.compliancesigns.com/products/restrooms/engraved-surface-mount-restroom-signs |



Example



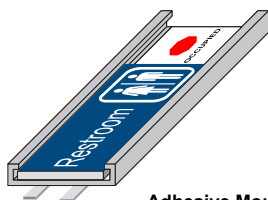
Available Background Colors

Engraved - Slides in Bracket:

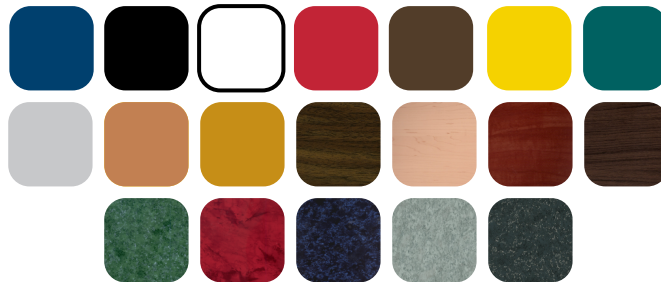
| | |
|----------------------|---|
| BRAILLE: | No |
| MOUNTING: | Bracket Mount - Slides to indicate room status |
| LANGUAGES AVAILABLE: | English, Spanish, Bilingual |
| SIGN MATERIAL: | 2-ply rotary engraved acrylic plastic |
| WEB SHORTCUT: | https://www.compliancesigns.com/products/restrooms/engraved-sliding-restroom-signs |



Example



Adhesive Mounting Strips



Available Background Colors

Restroom Signs (Page 5 of 5)

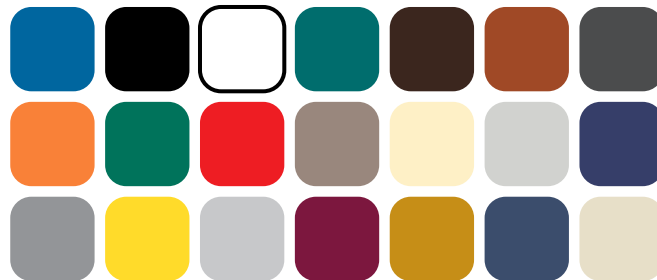
Product Group - Offering Summary

Tactile Braille - Small Format:

| | |
|----------------------|---|
| BRAILLE: | Yes |
| MOUNTING: | Adhesive Only or Optional Bracket |
| LANGUAGES AVAILABLE: | English, Spanish, Bilingual |
| SIGN MATERIAL: | ADA Acrylic - 1/16" Substrate, 1/32" Tactile, Grade 2 Braille |
| WEB SHORTCUT: | https://www.compliancesigns.com/products/restrooms/small-format-tactile-braille-restroom-signs |



Example



Available Background Colors